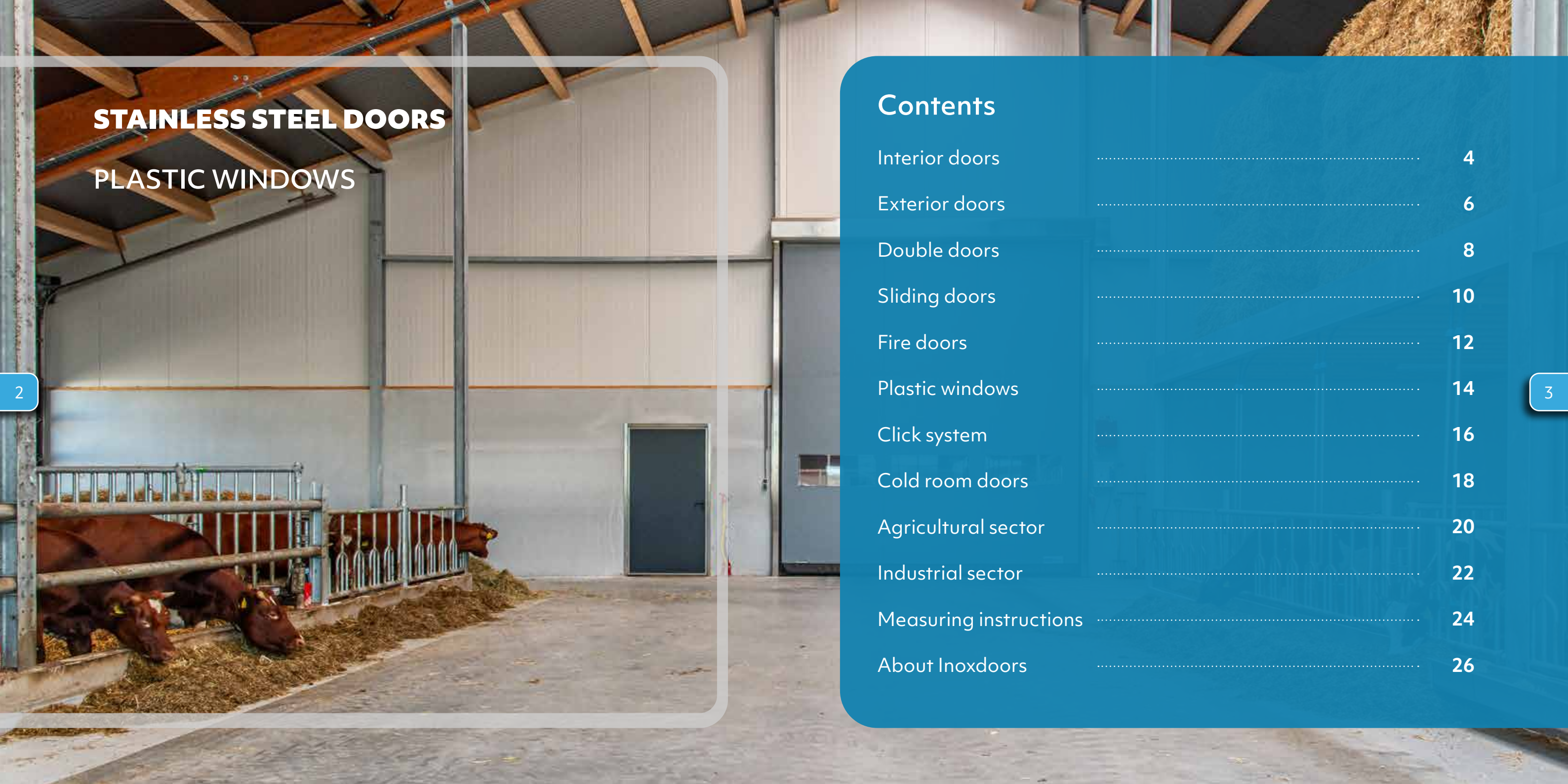




brochure

STAINLESS STEEL DOORS - PLASTIC WINDOWS



STAINLESS STEEL DOORS
PLASTIC WINDOWS

Contents

Interior doors	4
Exterior doors	6
Double doors	8
Sliding doors	10
Fire doors	12
Plastic windows	14
Click system	16
Cold room doors	18
Agricultural sector	20
Industrial sector	22
Measuring instructions	24
About Inoxdoors	26

INTERIOR DOORS

wicket doors for indoor use

The Inox interior door is the ideal maintenance-free door for indoors. The sleek, insulated door has a neat stainless steel edge, is made of highly wear-resistant material and is therefore suitable for frequent use.

Characteristics of the Inox interior door:

- Two types of door leaves: PVC insulated or sandwich panel
- Frame and edge of door leaf made of brushed stainless steel
- Stainless steel hinges and locks and plastic black door handle (optional stainless steel door handle)
- EPDM seal
- Sill of your choice (see page 25)
- PVC available as standard in grey (approx. RAL 7040) and white (RAL 9016), and sandwich box profile available as standard in interior white (RAL 9002)
- Optional: window frame of 600 x 300 mm with plexiglass and black plastic casing
- Optional: stainless steel window frame (600 x 600/800 mm)
- Optional: fixed knob, sliding knob, recessed handle or stainless steel latch
- Door with recess size 1,000 x 2,125 mm is available from stock
- Maximum dimensions of single door 1,500 x 3,000 mm

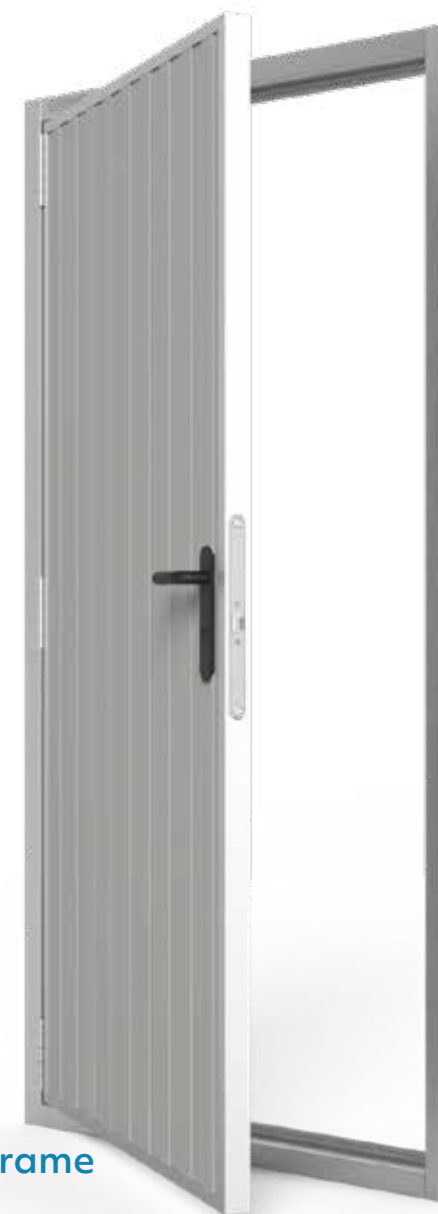


Various options

Insulated door leaf

Standard and custom-made

Robust stainless steel profile and frame





Insulated door leaf

Double seal is possible

Standard and custom-made

Robust stainless steel profile and frame

EXTERIOR DOORS

wicket doors for outdoor use

The Inox door for outdoor use: durable, wear-resistant and can be assembled based on your specific wishes. For example, you can choose from different door leaves and colours. You can also opt for a double seal for better burglary protection.

Characteristics of the Inox exterior door:

- Two types of door leaves: sandwich or polyester panel
- Frame and edge of door leaf made of brushed stainless steel
- Stainless steel hinges and locks and plastic door handle (optional stainless steel door handle)
- EPDM seal
- Sill of your choice (see page 25)
- External panel available in sandwich: black, white, green, anthracite or brown. Available in polyester in white, green and anthracite
- The inside is white as standard. Other colours available on request
- Optional: stainless steel window frame (600 x 600/800 mm)
- Optional: three-point locking system - cylinder operated
- Door with recess size 1,000 x 2,125 mm is available from stock
- Maximum dimensions of door: 1,500 x 3,000 mm (or when using polyester panel: max 1,400 x 2,600 mm)

DOUBLE DOORS

double wicket doors

Double doors for indoor and outdoor use. The ideal solution for areas where you often have to enter and exit with large equipment. You can easily create a large passage, without a mullion. Optionally, you can choose a double seal for better burglary protection.

Characteristics of the Inox double door:

- Choose from all types of door leaves
- Frame and edge of door leaf made of brushed stainless steel
- Stainless steel hinges and locks and plastic door handle (optional stainless steel door handle)
- EPDM seal
- Active door on the left or right is possible
- External panel available in sandwich: black, white, green, anthracite or brown.
- Available in polyester in white, green and anthracite. Other colours available on request
- Optional: stainless steel window frame (600 x 600/800 mm). Other dimensions available on request
- Maximum dimensions of door: 3,000 x 3,000 mm (or when using polyester panel: max 2.800 x 2,600 mm)
- Optional: three-point locking system - cylinder operated

No mullion

Insulating core

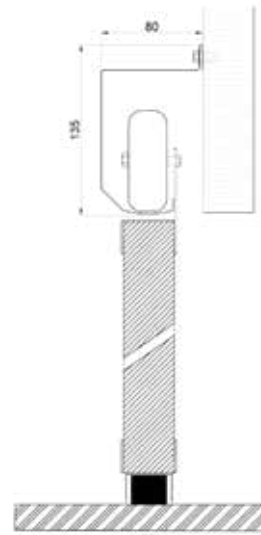
Various options

Double seal is possible

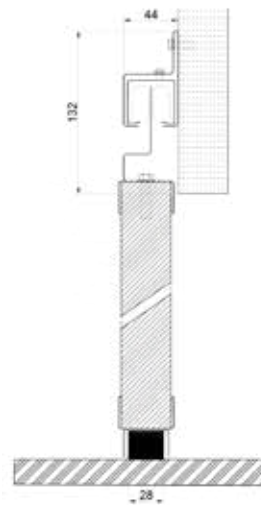




detail stainless
steel track



detail galvanised track



SLIDING DOORS

sliding doors as a space-saving solution

The Inox sliding doors are a high-quality solution if you want to save space. The doors are suitable for both indoor and outdoor use. You can provide additional daylight by adding a window.

You can choose from a galvanised track without a cover cap or a brushed stainless steel track that also functions as a cover cap.

Characteristics of the Inox sliding doors:

- Tracks: galvanised or brushed stainless steel
- Choose from all types of door leaves
- Left or right sliding
- Choice: single or double-winged
- Equipped with stainless steel door leaf edge and handle
- Plastic bottom guide
- Optional: stainless steel window frame (600 x 600/800 mm) with double glazing or a plexiglass window with black plastic frame 300 x 600 mm
- Custom work only

FIRE DOORS

Fire resistant for 60 minutes

Our fire doors are fire resistant for 60 minutes and are developed in accordance with EI2 and EN-1634-1. On request, we also supply doors that are fire resistant for 90, 120 and 240 minutes.

The doors are available in the following standard sizes:

- 970 x 2.145 mm
- 1.020 x 2.345 mm
- 1.000 x 2.150 mm
- 1.825 x 2.145 mm (double door)

The custom version of the fire door is available with:

- Custom dimensions
- Various colours
- Window in door
- Three-point locking system
- Ventilation grille

Is your option not listed? Please contact us.

Fire resistant for 60 minutes as standard

Standard and custom dimensions

EI2 and EN-1634-1 standard

Various options





More daylight

Low-maintenance

Top- and bottomhung window

Quickly available as standard

PLASTIC WINDOWS

more daylight

The plastic Inox windows are a good addition to the Inox wicket doors. They are equally low-maintenance and provide more daylight inside. The windows are available from stock in various sizes and are also available custom-made.

Available from stock:

(version: white and with flange)

800 x 600 mm

1.000 x 800 mm

1.000 x 1.000 mm

2.000 x 1.000 mm

(version: anthracite and with flange)

1.000 x 800 mm

1.000 x 1.000 mm

Characteristics of the Inox windows:

- White plastic or in colour (ask for the possibilities)
- Available with and without cover flange
- Fixed glass, bottom-hung window or tilt and turn window
- Equipped with insulating glass (24 mm thick)

CLICK SYSTEM

plastic windows for indoor use

Easy installation

The plastic windows are easy to install. Simply tap it into place with a plastic hammer. The click system interlocks and ensures that the window is firmly secured.

Plastic windows with a click system are only available in the following standard sizes:

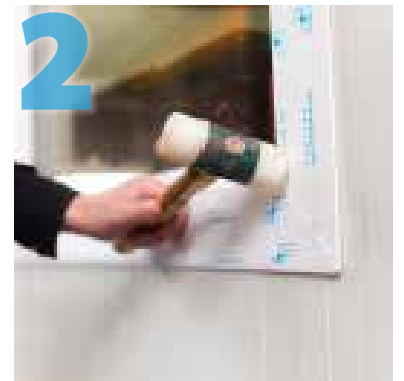
- 1.000 x 800 mm
- 1.000 x 1.000 mm
- 2.000 x 1.000 mm

Advantages of the click system:

- Lightweight frame with window
- Installation only requires a plastic hammer
- Ideal for use in sandwich panel walls

Installation in three steps:

1. Place the click frame in the opening
2. Place the click casing and tap it into place with a plastic hammer
3. Remove plastic and finish as desired





Quickly available
Low-maintenance
Suitable for the food sector
For intensive production environments



COLD ROOM DOORS

conditioned rooms

We supply standard cold room doors for closing refrigerated or other conditioned rooms. You can contact us for cold room doors with fixed dimensions. It is convenient that you can adjust the wall to the door dimensions beforehand.

Custom-made cold room doors

Are you looking for a customised solution for your conditioned room? We work with a renowned partner who supplies customised conditioned rooms. We can also offer you sliding doors, doors with non-standard dimensions and other door options.

Doors available from stock:

- Revolving door: 1.000 x 2.100 mm
- Sliding door: 2.000 x 2.500 mm

Please contact us for custom-made cold room doors.

AGRICULTURAL SECTOR

doors for stables and agricultural structures

From the start of Inoxdoors, the agricultural sector has been a major sales market for our products.

The stainless steel wicket door is still a household name in stable construction and all agricultural-related buildings and areas.

The design with stainless steel frames and profiles forms the basis of a good stable door. The door profile provided with a panel is ideal for the conditions in animal enclosures and related areas.

Inoxdoors windows and doors are used in both livestock farming and arable farming. Both revolving doors and space-saving sliding doors are used for easy access and separation of areas.

The maintenance-free concept together with the resistant materials ensure a long lifespan of the products, which is ideal for the demanding conditions on the farm.

Are you curious about what we can do for your company? Call or e-mail us for an appointment.





INDUSTRIAL SECTOR

industrial doors and fire doors

Inoxdoors products are made to function for years under demanding conditions. The doors are therefore ideal for use in industrial environments.

Stainless steel profiles and frames guarantee a long lifespan under the most common circumstances. In addition, the doors and windows require little maintenance. Periodic cleaning is sufficient to keep the products functioning for many years.

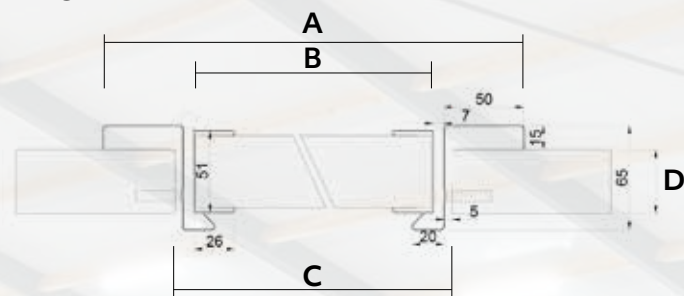
In combination with a 'food-safe' panel, the Inoxdoors doors are suitable for companies in the food sector. Fire doors are also available in a version that complies with food safety regulations.

For over 10 years, our doors and windows have been finding their way into the industry. Both single and double wicket doors for easy access, as well as plastic windows for more daylight or a better overview in production areas.

Are you curious about what we can do for your company? Call or e-mail us for an appointment.

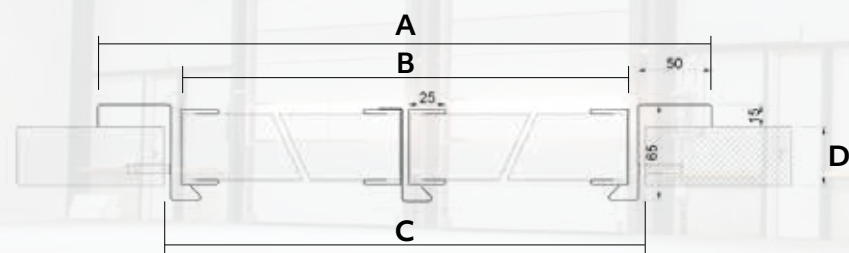
DRAWINGS

single door



- A** Frame width Recess size + 85 mm
- B** Passage opening Recess size - 58 mm
- C** Recess size Max. 1.500 mm
- D** Wall thickness From 40 mm

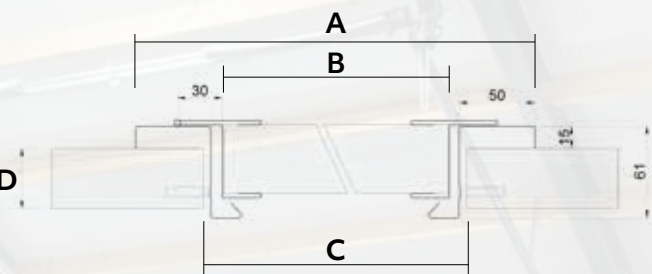
double door



- A** Frame width Recess size + 85 mm
- B** Passage opening Recess size - 58 mm
- C** Recess size Max. 3.000 mm
- D** Wall thickness From 35 mm

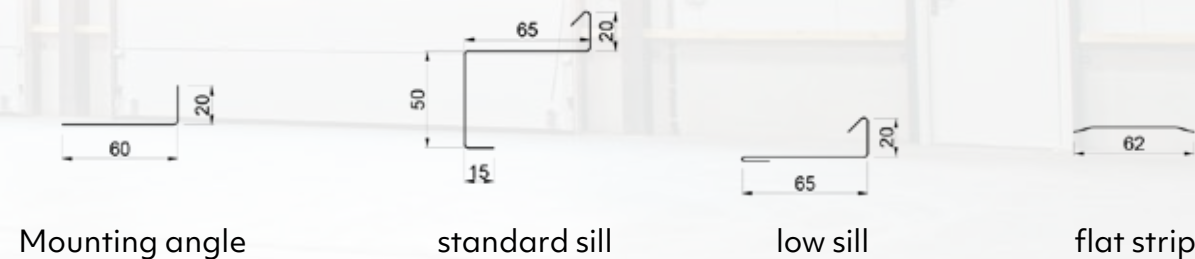
DRAWINGS

double seal door



- A** Frame width Recess size + 85 mm
- B** Passage opening Recess size - 58 mm
- C** Recess size Max. 1.500 mm
- D** Wall thickness From 40 mm

sill options



ABOUT INOXDOORS

more about us

Inoxdoors has been a driven company in the production of stainless steel doors since 2011. We specialise in custom work, because no stable, hall or warehouse is the same. This often requires specific solutions that suit your needs. We are happy to offer this to you.

When doors and windows are used intensively in specific business premises, reliable products are of great importance. That is why Inoxdoors strives to provide durability, reliability and a good finish.

Short lines of communication and flexibility mean that custom-work is no longer a time-consuming and expensive option. We deliver your door within three weeks at a competitive price.

From our production location, centrally in the Netherlands, our products are delivered to many construction sites. We have our own means of transport for efficient delivery.

Are you curious about what we can do for you? Call or e-mail us for an appointment, we are happy to think along with you!





INOXDOORS bv
De Stroet 2a
6741 PT Lunteren
The Netherlands

0318-484 985
info@inoxdoors.com
www.inoxdoors.com

Copyright © 2023 - Inoxdoors bv